

- Remaining Level of Effort
- Actual Level of Effort
- Actual Work
- Remaining Work
- Critical Remaining Work
- ◆ Milestone

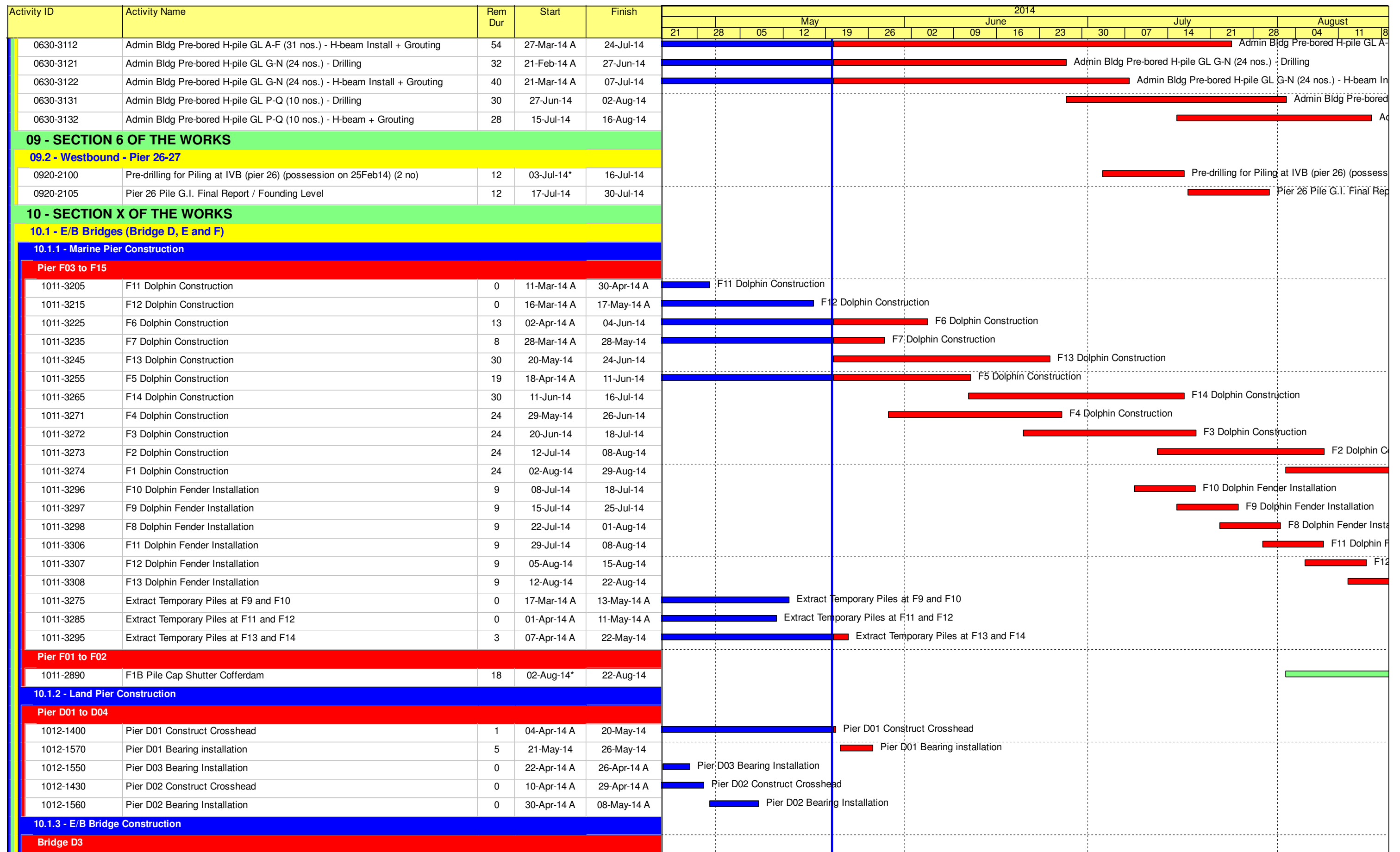
Contract HY/2009/19

Three Month Rolling Programme (20 May to 19 Aug 2014)

3MRP

3MRP - May 2014 to Aug 2014

Page 2 of 8



- █ Remaining Level of Effort
- █ Actual Level of Effort
- █ Actual Work
- █ Remaining Work
- █ Critical Remaining Work
- ◆ Milestone

Contract HY/2009/19

Three Month Rolling Programme (20 May to 19 Aug 2014)

3MRP

3MRP - May 2014 to Aug 2014

Page 4 of 8

Activity ID	Activity Name	Rem Dur	Start	Finish	2014															
					May					June					July				August	
					21	28	05	12	19	26	02	09	16	23	30	07	14	21	28	04
10.5 - Temporary Bridge																				
10.5.1 - Temporary Bridge 'TA'																				
1051-1017	Temporary Bridge TA1 - Bridge Decking + Tie-in to Existing HFSR	6	23-Sep-13 A	26-May-14	Temporary Bridge TA1 - Bridge Decking + Tie-in to Existing HFSR															
1051-1018	Temporary Bridge TA1 - Parapet	6	13-Jan-14 A	26-May-14	Temporary Bridge TA1 - Parapet															
10.5.3 - Temporary Bridge 'TD'																				
1053-1010	"TD" - Pier F8 to F10 Tower Erection (3 nos.)	4	14-Apr-14 A	23-May-14	"TD" - Pier F8 to F10 Tower Erection (3 nos.)															
1053-1011	"TD" - Pier F8 to F10 Beam Erection	12	13-May-14 A	07-Jun-14	"TD" - Pier F8 to F10 Beam Erection															
1053-1012	"TD" - Pier F8 to F10 Bond Deck Erection	15	07-Jun-14	25-Jun-14	"TD" - Pier F8 to F10 Bond Deck Erection															
1053-1013	"TD" - Pier F8 to F10 Slab Construction	12	25-Jun-14	10-Jul-14	"TD" - Pier F8 to F10 Slab Construction															
1053-1014	"TD" - Pier F8 to F10 Parapet	12	10-Jul-14	24-Jul-14	"TD" - Pier F8 to F10 Parapet															
1053-1015	"TD" - Pier F8 to F10 Connection to Bridge F4/F5	18	10-Jul-14	31-Jul-14	"TD" - Pier F8 to F10 Connection to Bridge F4/F5															
1053-1021	"TD" - Pier F10 to F14 Tower Erection	18	07-Jun-14	28-Jun-14	"TD" - Pier F10 to F14 Tower Erection															
1053-1061	"TD" - Pier F10 to F14 Beam Erection	18	28-Jun-14	21-Jul-14	"TD" - Pier F10 to F14 Beam Erection															
1053-1062	"TD" - Pier F10 to F14 Bond Deck Erection	18	21-Jul-14	11-Aug-14	"TD" - Pier F10 to F14 Bond Deck Erection															
1053-1063	"TD" - Pier F10 to F14 Slab Construction	18	11-Aug-14	01-Sep-14	"TD" - Pier F10 to F14 Slab Construction															
1053-1074	"TD" - Pier F5 to F8 Tower Erection	15	05-Jun-14	21-Jun-14	"TD" - Pier F5 to F8 Tower Erection															
1053-1094	"TD" - Pier F5 to F8 Beam Erection	18	16-Jun-14	07-Jul-14	"TD" - Pier F5 to F8 Beam Erection															
1053-1104	"TD" - Pier F5 to F8 Bond Deck Erection	18	26-Jun-14	17-Jul-14	"TD" - Pier F5 to F8 Bond Deck Erection															
1053-1114	"TD" - Pier F5 to F8 Slab Construction	18	08-Jul-14	28-Jul-14	"TD" - Pier F5 to F8 Slab Construction															
1053-1115	"TD" - Pier F5 to F8 Connection to Bridge F3A	18	08-Jul-14	28-Jul-14	"TD" - Pier F5 to F8 Connection to Bridge F3A															
1053-1124	"TD" - Pier F5 to F8 Parapet	15	18-Jul-14	04-Aug-14	"TD" - Pier F5 to F8 Parapet															
10.6 - Tunnel Approach Ramp																				
10.6.1 - Approach Ramp (Excluding Portion IIB)																				
Bored Piles																				
1061-1670	Remaining Pre-drilling for Approach Ramp Bored Piles	18	19-Jul-13 A	10-Jun-14	Remaining Pre-drilling for Approach Ramp Bored Piles															
1061-1830	Bored Pile Ramp - BM32	0	09-Apr-14 A	24-Apr-14 A	Bored Pile Ramp - BM32															
1061-1840	Bored Pile Ramp - BM21	0	14-Apr-14 A	28-Apr-14 A	Bored Pile Ramp - BM21															
1061-1850	Bored Pile Ramp - BM13	1	23-Apr-14 A	20-May-14	Bored Pile Ramp - BM13															
1061-1860	Bored Pile Ramp - BM20	1	05-May-14 A	20-May-14	Bored Pile Ramp - BM20															
1061-1880	Bored Pile Ramp - BM36	6	08-May-14 A	26-May-14	Bored Pile Ramp - BM36															
1061-1890	Bored Pile Ramp - BM29	13	19-May-14 A	04-Jun-14	Bored Pile Ramp - BM29															
1061-1870	Bored Pile Ramp - BM28	0	29-Apr-14 A	17-May-14 A	Bored Pile Ramp - BM28															
1061-1900	Bored Pile Ramp - BM34	15	27-May-14	13-Jun-14	Bored Pile Ramp - BM34															
1061-1910	Bored Pile Ramp - BM16	15	05-Jun-14	21-Jun-14	Bored Pile Ramp - BM16															
1061-1920	Bored Pile Ramp - BM23	15	14-Jun-14	02-Jul-14	Bored Pile Ramp - BM23															
1061-1930	Bored Pile Ramp - BM28	15	23-Jun-14	10-Jul-14	Bored Pile Ramp - BM28															
1061-1940	Bored Pile Ramp - BM24	15	03-Jul-14	19-Jul-14	Bored Pile Ramp - BM24															
10.7 - Section X - Miscellaneous Works																				
10.7.1 - TTM Stages																				
1071-1005	TTA Stage 2A - TMLG / TD / Police Consultation and Endorsement	35	19-May-14 A	30-Jun-14	TTA Stage 2A - TMLG / TD / Police Consultation and Endorsement															

- Remaining Level of Effort
- Actual Level of Effort
- Actual Work
- Remaining Work
- Critical Remaining Work
- ◆ Milestone

Contract HY/2009/19

Three Month Rolling Programme (20 May to 19 Aug 2014)

3MRP

3MRP - May 2014 to Aug 2014

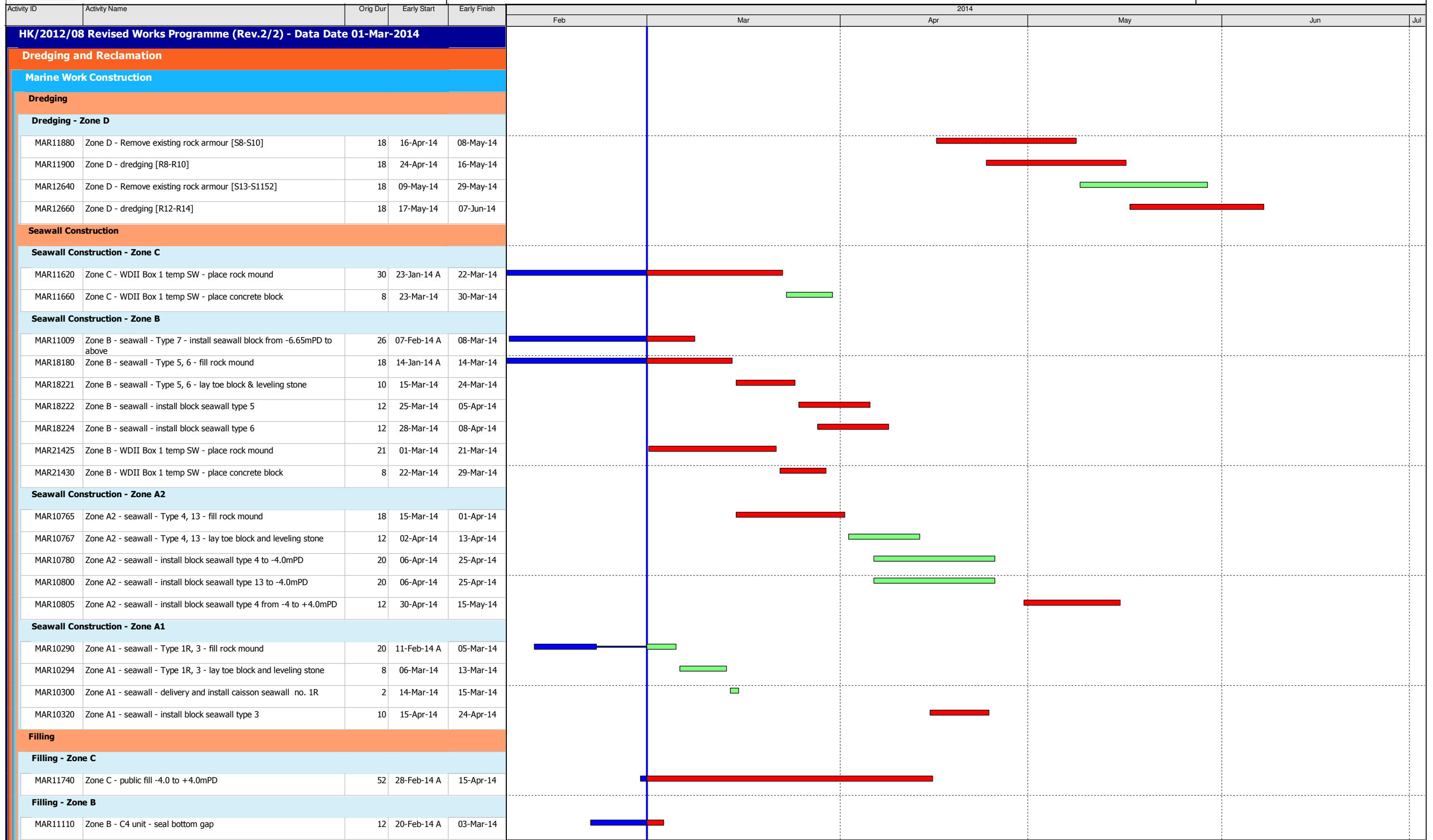
Page 8 of 8

Activity Name	Duration (cal days)	Start	Finish	Total Float	2011				2012				2013				2014				2015				2016			
					Q1	Q2	Q3	Q4	Q1	Q2	Q3	Q4	Q1	Q2	Q3	Q4	Q1	Q2	Q3	Q4	Q1	Q2	Q3	Q4	Q1	Q2	Q3	Q4
HY/2009/15 - Works Programme Rev. K (DD:20-Feb-14) 1st Submission																												
Works in East Ventilation Adit - Based on Alternative Method																												
EAST VENTILATION ADIT - SUMMARY	774d	08-May-12 A	20-Jun-14	14d																								
Works in TS1 Area (Portion 13A, 13B) & CCT at Portion 1,2,4,6,22																												
TS1 - Temporary Reclamation																												
TS1 - TEMPORARY RECLAMATION SUMMARY	127d	07-Jan-11 A	13-May-11 A																									
TS1 - Diaphragm Wall																												
TS1 DIAPHRAGM WALL & PUMP TEST SUMMARY	235d	19-May-11 A	30-Dec-11 A																									
TS1 - ELS Works																												
TS1 ELS SUMMARY	103d	05-Jan-12 A	16-Apr-12 A																									
TS1-CCT RC Structure																												
TS1 CCT - SUMMARY	100d	12-Jan-12 A	19-Jun-12 A																									
EV Adit at Portion 1,2,6,22																												
EVA AT PORTION 1 & 2	27d	13-Jun-12 A	17-Jul-12 A																									
TS1 - Removal of Temp. Reclamation																												
TS1 - REMOVAL OF TEMP. RECLAMATION SUMMARY	133d	04-Jun-12 A	15-Oct-12 A																									
Removal of Temp. Reclamation																												
DURATION OF TEMP. RECLAMATION TS1W (MAX=391D)	604d	25-Jan-11 A	20-Sep-12 A																									
DURATION OF TEMP. RECLAMATION TS1E (EXCLUDING TS1W) (MAX=90D)	557d	13-Mar-11 A	20-Sep-12 A																									
Works in TS2 Area (Portion 13A, 13B)																												
TS2 - Temporary Reclamation																												
TS2 - TEMPORARY RECLAMATION SUMMARY	430d	16-Apr-12 A	20-Jun-13 A																									
TS2 - Diaphragm Wall																												
TS2 - DIAPHRAGM WALL SUMMARY	281d	21-Nov-12 A	28-Aug-13 A																									
TS2 - ELS Works																												
TS2 ELS SUMMARY	87d	17-Sep-13 A	13-Dec-13 A																									
TS2 - CCT RC Structure																												
TS2 - CCT SUMMARY	123d	23-Nov-13 A	25-Mar-14	-59d																								
TS2 - Removal of Temp. Reclamation																												
TS2 - REMOVAL OF TEMP. RECLAMATION SUMMARY	82d	11-Mar-14	31-May-14	-129d																								
Removal of Temp. Reclamation																												
DURATION OF TEMP. RECLAMATION TS2 (MAX= 595D)	1233d	15-Jan-11 A	31-May-14	-122d																								
DURATION OF TEMP. RECLAMATION T21 (MAX= 990D)	1223d	25-Jan-11 A	31-May-14	-122d																								
Works in TS1/TS2 - Cable Trough/Maintenance Walkway																												
TS2 CABLE TROUGH SUMMARY	218d	06-Jan-14 A	11-Aug-14	-38d																								
Works in TS4/ME4 Area (Portion 14A, 14B, 15, 23)																												
TS4 + ME4 (TS4+ & TZ6) Temporary Reclamation																												
TS4 - TEMPORARY RECLAMATION SUMMARY	364d	20-Jan-11 A	16-Apr-12 A																									
TS4/ME4 - Diaphragm Wall																												
DIAPHRAGM WALL SUMMARY	310d	23-Dec-11 A	27-Oct-12 A																									
TS4/ME4 - ELS Works & Rock Excavation																												
TS4 - ELS + ROCK EXCAVATION SUMMARY	378d	10-Oct-12 A	22-Oct-13 A																									
TS4/ME4 - Mined Tunnel East Portal Works																												
MT EAST PORTAL WORKS SUMMARY	201d	16-Aug-13 A	13-Mar-14	-205d																								
TS4/ME4 - CCT RC Structure																												
TS4/ME4 - CWB CCT SUMMARY	310d	20-May-13 A	05-Apr-14	-205d																								
TS4/ME4 - SCL CCT SUMMARY	125d	20-Dec-13 A	04-May-14	-205d																								
TS4/ME4 - Removal of Temporary Reclamation																												
DURATION OF TEMP. RECLAMATION TS4 (MAX=1029D)	1159d	28-Apr-11 A	29-Jun-14	-218d																								
REMOVAL OF TEMP. RECLAMATION SUMMARY	64d	28-Apr-14	30-Jun-14	-218d																								
Re-provision of Permanent Jetty/ Floating Pontoon																												
RE-PROVISION OF PERMANENT JETTY	150d	20-Feb-14	22-Aug-14	414d																								
CHT Protection Works at Location A,B,C																												
ADMS Installation																												
ADMS INSTALLATION - SUMMARY	74d	01-Feb-11 A	15-Apr-11 A																									
Standby Dewatering System(CSD: Grout Curtain Cut-off Wall Scheme)																												
STANDBY DEWATERING SYSTEM - SUMMARY	452d	19-Apr-11 A	13-Jul-12 A																									
VO.No. 9 - Steel Weights & Aluminum Cladding Inside CHT																												
VO No. 8 & 14 - STEEL WEIGHTS & CLADDING SUMMARY	378d	20-Aug-11 A	31-Aug-12 A																									
Works in TPCWAE Area (Portion 20A, 20B)																												
TPCWAE - Temporary Reclamation																												
TPCWAE - TEMPORARY RECLAMATION SUMMARY	143d	08-Dec-10 A	07-Jun-11 A																									
TPCWAE - Diaphragm Wall																												
DIAPHRAGM WALL & PUMP TEST SUMMARY	252d	13-Jun-11 A	30-Jan-12 A																									
TPCWAE-ELS Works & Soft Excavation																												
TPCWAE - ELS SUMMARY (EXCEPT ROCK EXCAVATION)	240d	17-Jan-12 A	12-Sep-12 A																									
TPCWAE - Rock Excavation																												
TPCWAE - ROCK EXCAVATION SUMMARY	276d	19-Jun-12 A	05-Apr-13 A																									
MT West Portal Works																												
MT WEST PORTAL WORKS SUMMARY	375d	08-Nov-12 A	04-Dec-13 A																									
CCT RC Structure																												
CCT - AREA A	359d	24-Jan-13 A	18-Mar-14	-127d																								
CCT - AREA B, STITCHING AREA	111d	27-Nov-13 A	23-Mar-14	-127d																								
Removal of Temporary Reclamation																												
REMOVAL OF RECLAMATION SUMMARY	43d	15-Mar-14	30-Apr-14	-143d																								
Works in TPCWAW Area																												
TPCWAW - Temporary Reclamation																												
TPCWAW - TEMPORARY RECLAMATION SUMMARY	86d	02-May-14	26-Jul-14	0d																								
TPCWAW - Diaphragm Wall																												
DIAPHRAGM WALL & PUMP TEST SUMMARY	193d	27-Jul-14	04-Feb-15	0d																								
TPCWAW-ELS Works																												
TPCWAW - ELS SUMMARY (EXCEPT ROCK EXCAVATION)	88d	06-Feb-15	04-May-15	0d																								
TPCWAW - ROCK EXCAVATION																												
TPCWAW - ROCK EXCAVATION SUMMARY	104d	29-Apr-15	10-Aug-15	1d																								
TPCWAW-CCT RC Structure																												
TPCWAW - CCT SUMMARY	94d	24-Jul-15	25-Oct-15	0d																								
TPCWAW - Removal of Temporary Reclamation																												
DURATION OF TEMP. RECLAMATION T25 (MAX=1666D)	1812d	11-Feb-11 A	27-Jan-16	0d																								
DURATION OF TEMP. RECLAMATION TPCWAW MAX=816D)	628d	09-May-14	27-Jan-16	0d																								
REMOVAL OF TEMP. RECLAMATION SUMMARY	59d	18-Oct-15	27-Jan-16	0d																								
Works for Mined Tunnel (Portion 16, 17, 18)																												
(SR8) Slip Road 8 Tunnel, Total L = 167m, less 13m at WP and less 5m at EP= 149m Tunnel Excav																												
SR8 - MINED TUNNEL WORKS SUMMARY	515d	19-Oct-13 A	17-Mar-15	230d																								
(EB) East Bound Tunnel, L = 167m, less 7m at WP and less 1.5m at EP= 158.5m Tunnel Excav																												
EB - MINED TUNNEL WORKS SUMMARY	745d	19-Oct-13 A	02-Nov-15	0d																								
(WB) West Bound Tunnel, L = 153m, less 7m at WP and less 1.5m at EP= 144.5m Tunnel Excav																												
WB - MINED TUNNEL WORKS SUMMARY	745d	19-Oct-13 A	02-Nov-15	0d																								

Actual Level of Effort
 Remaining Level of Effort
 Milestone
 Milestone

China State Construction Engineering (HK) Ltd :
HY/2009/15 - CWB Tunnel(CBTS)
EXECUTIVE SUMMARY PROGRAMME

Prepared by William Caluza			
Date	Revision	Checked	Approved
20-Feb-14	Executive Summary Progra...	GC	KC



Data Date: 01-Mar-14

- ◆ Current Milestone
- Actual Work
- Critical Remaining Work
- Remaining Work
- Remaining Level of Effort

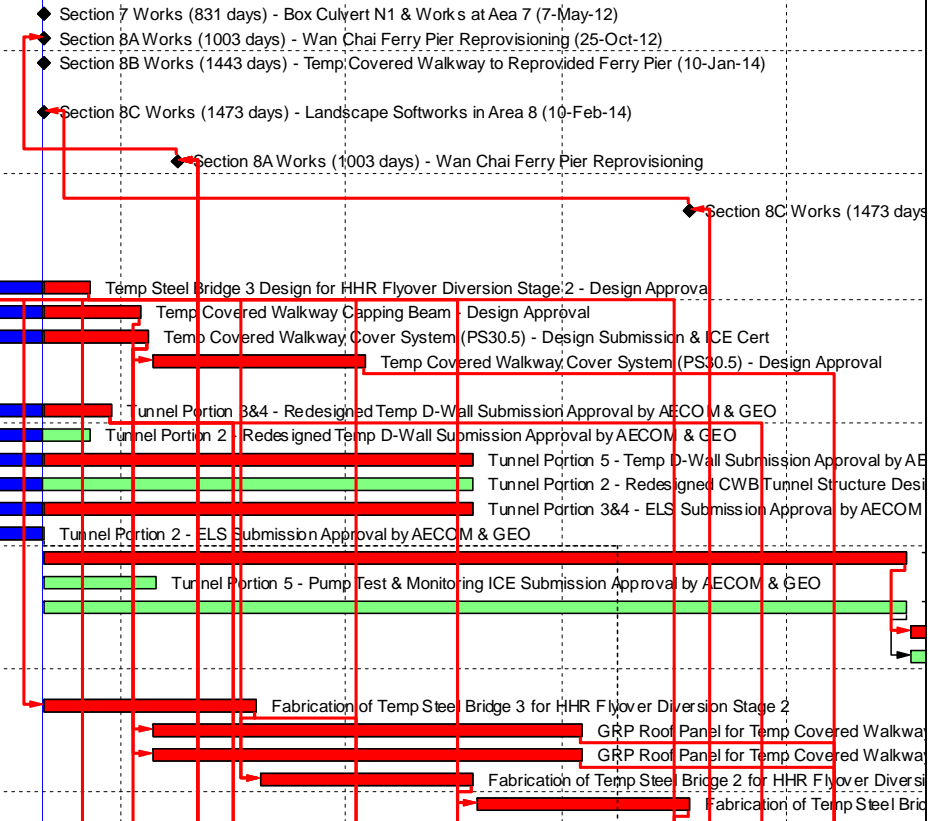
3-Month Rolling Programme for Works outside CRIII Area
(Mar 2014 to May 2014)

Date	Revision	Checked	Approved
01-Mar-14	Rev. 2		



Activity ID	Activity Name	Orig Dur	Early Start	Early Finish	2014						
					Feb	Mar	Apr	May	Jun	Jul	
Section VIII - Landscape Softworks											
Soft Landscaping Works											
SVIII10020	Sec VIII - Tree Felling/Transplanting at Portion 2 & 2A	90	20-Nov-13 A	12-Jun-14							
Section X - Protection & Preservation of Trees											
Soft Landscaping Works											
SX10020	Sec X - Protection & Preservation of Trees	1632	31-Jan-13 A	20-Jul-17							

Activity ID	Activity Name	OD	RD	Start	Finish	Total Float	Calendar	2014					
								Apr 52	May 53	Jun 54	Jul 55	Aug 56	
Wan Chai Development Phase II - Central - Wan Chai Bypass at Wan Chai East (dd 20-Apr-14)													
Programme Milestones (Revised up to EOTO No.10 Issued on 29-Nov-13)													
Contractual Completion Dates													
KDC0110	Section 7 Works (831 days) - Box Culvert N1 & Works at Aea 7 (7-May-12)	0	0	20-Apr-14	20-Apr-14*	-712	Calendar Day						
KDC0120	Section 8A Works (1003 days) - Wan Chai Ferry Pier Re-provisioning (25-Oct-12)	0	0	20-Apr-14	20-Apr-14*	-541	Calendar Day						
KDC0130	Section 8B Works (1443 days) - Temp Covered Walkway to Re-provided Ferry Pier (10-Jan-14)	0	0	20-Apr-14	20-Apr-14*	-99	Calendar Day						
Soft Landscaping & Establishment Key Dates													
KDC0140	Section 8C Works (1473 days) - Landscape Softworks in Area 8 (10-Feb-14)	0	0	20-Apr-14	20-Apr-14*	-68	Calendar Day						
Forecast Completion Dates													
KDF0120	Section 8A Works (1003 days) - Wan Chai Ferry Pier Re-provisioning	0	0	08-May-14	18-Jul-14	-158	Calendar Day						
Soft Landscaping & Establishment Key Dates													
KDF0140	Section 8C Works (1473 days) - Landscape Softworks in Area 8	0	0	18-Jul-14	18-Jul-14	-158	Calendar Day						
Preliminaries													
Critical Submission & Approval													
PRE-SUB-1030B	Temp Steel Bridge 3 Design for HHR Flyover Diversion Stage 2 - Design Approval	60	7	25-May-13 A	26-Apr-14	-367	Calendar Day						
PRE-SUB-1000B	Temp Covered Walkway Capping Beam - Design Approval	30	14	19-Jun-13 A	03-May-14	-421	Calendar Day						
PRE-SUB-1010A	Temp Covered Walkway Cover System (PS30.5) - Design Submission & ICE Cert	90	15	18-Oct-13 A	04-May-14	-411	Calendar Day						
PRE-SUB-1010B	Temp Covered Walkway Cover System (PS30.5) - Design Approval	30	30	05-May-14	03-Jun-14	-411	Calendar Day						
CSD for CWB Tunnel													
PRE-CSD-3000B	Tunnel Portion 3&4 - Redesign Temp D-Wall Submission Approval by AECOM & GEO	30	10	08-Jun-13 A	29-Apr-14	-354	Calendar Day						
PRE-CSD-2000B	Tunnel Portion 2 - Redesign Temp D-Wall Submission Approval by AECOM & GEO	30	7	19-Jul-13 A	26-Apr-14	1573	Calendar Day						
PRE-CSD-5000B	Tunnel Portion 5 - Temp D-Wall Submission Approval by AECOM & GEO	60	60	15-Aug-13 A	18-Jun-14	-15	Calendar Day						
PRE-CSD-2030B	Tunnel Portion 2 - Redesign CWB Tunnel Structure Design Submission Approval by AECOM	60	60	16-Nov-13 A	18-Jun-14	233	Calendar Day						
PRE-CSD-3010B	Tunnel Portion 3&4 - ELS Submission Approval by AECOM & GEO	60	60	17-Jan-14 A	18-Jun-14	-77	Calendar Day						
PRE-CSD-2010B	Tunnel Portion 2 - ELS Submission Approval by AECOM & GEO	60	0	30-Jan-14 A	20-Apr-14	130	Calendar Day						
PRE-CSD-5010A	Tunnel Portion 5 - ELS ICE Submission	120	120	20-Apr-14	17-Aug-14	-18	Calendar Day						
PRE-CSD-5020B	Tunnel Portion 5 - Pump Test & Monitoring ICE Submission Approval by AECOM & GEO	16	16	20-Apr-14	05-May-14	132	Calendar Day						
PRE-CSD-6010A	Tunnel Portion 6 - ELS ICE Submission	120	120	20-Apr-14	17-Aug-14	215	Calendar Day						
PRE-CSD-5010B	Tunnel Portion 5 - ELS Submission Approval by AECOM & GEO	60	60	18-Aug-14	16-Oct-14	-18	Calendar Day						
PRE-CSD-6010B	Tunnel Portion 6 - ELS Submission Approval by AECOM & GEO	60	60	18-Aug-14	16-Oct-14	215	Calendar Day						
Critical Procurement & Site Delivery													
PRE-PRO-1200C	Fabrication of Temp Steel Bridge 3 for HHR Flyover Diversion Stage 2	30	30	20-Apr-14	19-May-14	-367	Calendar Day						
PRE-PRO-1100A	GRP Roof Panel for Temp Covered Walkway (Type 1)	60	60	05-May-14	03-Jul-14	-381	Calendar Day						
PRE-PRO-1100B	GRP Roof Panel for Temp Covered Walkway (Type 2)	60	60	05-May-14	03-Jul-14	-381	Calendar Day						
PRE-PRO-1200B	Fabrication of Temp Steel Bridge 2 for HHR Flyover Diversion Stage 2	30	30	20-May-14	18-Jun-14	-367	Calendar Day						
PRE-PRO-1200A	Fabrication of Temp Steel Bridge 1 for HHR Flyover Diversion Stage 2	30	30	19-Jun-14	18-Jul-14	-367	Calendar Day						
Section 3 of the Works - Re-provisioning of Government Helipad and Public Toilet													
Outstanding Works													
S3-0070-1499	Reinstatement of armour rock, retaining walls & new covered walkway along Expo Drive East	254	28	11-Aug-12 A	26-May-14	1241	HK Working Day						
Section 4A of the Works - Cooling Water Pumping System for Sun Hung Kai Centre (P8)													
Cooling Mains Work above Tunnel Portion & connecting to Pump Station													
S4A-0900	Outstanding Works	365	302	16-Feb-14 A	15-Feb-15	1278	Calendar Day						
Section 4B of the Works - Cooling Water Pumping System for China Resources Building (P9)													
Cooling Mains Work within Hoarding Area													
Zone 4A Pipe Installation CHAI 080-160		6	6	22-Apr-14	28-Apr-14	1263	HK Working Day						
S4B-0060-180	Reinstatement	6	6	22-Apr-14	28-Apr-14	1263	HK Working Day						
Cooling Mains Work at Junction between Convention Avenue and Tonnochy Road													
Zone 4B-1& 4B-2 Pipe Installation CHAI 170-160		3	3	22-Apr-14	24-Apr-14	1266	HK Working Day						
S4B-0060-300	Reinstatement	3	3	22-Apr-14	24-Apr-14	1266	HK Working Day						
Cooling Mains Work above Tunnel Portion & connecting to Pump Station													
S4B-0900	Outstanding Works	365	164	01-Oct-13 A	30-Sep-14	1416	Calendar Day						
Section 4C of the Works - Cooling Water Pumping System for Great Eagle Centre / Harbour Centre (P7)													
Cooling Mains Work within Hoarding Area CHAG 210-150													
S4C-0060-150	Reinstatement	6	6	22-Apr-14	28-Apr-14	1263	HK Working Day						
Cooling Mains Work at Junction between Convention Avenue and Tonnochy Road													
Zone 4B-1& 4B-2 Pipe Installation CHAG 210-220		3	3	22-Apr-14	24-Apr-14	1266	HK Working Day						
S4C-0060-240	Reinstatement	3	3	22-Apr-14	24-Apr-14	1266	HK Working Day						
Cooling Mains Work above Tunnel Portion & connecting to Pump Station													
S4C-0900	Outstanding Works	365	215	21-Nov-13 A	20-Nov-14	1365	Calendar Day						
Section 5 of the Works - WSD Salt Water Pumping System													
WSD Salt Water Pumping Station													
Builder and E&M works for WSD's pumping station													
Finishing works													
S5-0060-1801	Metal Works & Misc. Works	282	30	06-Jun-12 A	28-May-14	1239	HK Working Day						
Salt Water Intake Culvert Construction													
Bay 6 - Bay 18: Ex-Pet Garden & Hung Hing Road		23	7	20-Apr-13 A	29-Apr-14	-581	HK Working Day						
S5-100-3333	Backfilling to Bay 6 to Bay 11 (2,000m3; 150m3/d)	23	7	20-Apr-13 A	29-Apr-14	-581	HK Working Day						
Overall Testing & Commissioning of Re-provisioned Salt Water Intake System													
S5-0900	Outstanding Works	365	320	06-Mar-14 A	05-Mar-15	1260	Calendar Day						



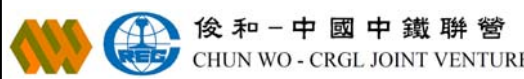
俊和 - 中國中鐵聯營
CHUN WO - CRGL JOINT VENTURE

█ Remaining Work █ Summary Bar
█ Actual Work █ Critical Remaining Work
◆ Milestone

CEDD CONTRACT NO. HK/2009/02
Wan Chai Development Phase II - Central-Wan Chai Bypass at Wan Chai East (Contract 2)
3-MONTH ROLLING PROGRAMME (dd 20-Apr-14)

Date	Revision	Checked	Approved
20-Apr-14	3MRP		
20-Feb-14	Baseline Prog		

Activity ID	Activity Name	OD	RD	Start	Finish	Total Float	Calendar	2014							
								Apr 52	May 53	Jun 54	Jul 55	Aug 56			
Section 7 of the Works - Box Culvert N1 & Flood Relief System															
Box Culvert and Flood Relief System Construction															
S7-191212-260	Backfilling for 1050mm FRP installation & Strut Removal	4	4	22-Apr-14	26-Apr-14	-213	HK Working Day								
Works in Area 7															
S7-1200	Strut S3 Removal	7	7	09-Apr-14 A	26-Apr-14	-1066	Calendar Day								
S7-1000	Load Transfer for King Post to Completed Roof Slab	14	14	27-Apr-14	10-May-14	-1066	Calendar Day								
S7-1100	Tunnel Portion 1 Backfilling to Strut S3 Level (15,000m3; 2,000m3/d)	8	8	20-May-14	27-May-14	-1075	Calendar Day								
S7-1250	Backfill and SWIC Temp U/U Bridge Load Transfer (10,000m3; 2,000m3/d)	12	12	28-May-14	08-Jun-14	-1075	Calendar Day								
S7-1300	Tunnel Portion 1 Backfilling to Strut S2 Level (15,000m3; 2,000m3/d)	8	8	09-Jun-14	16-Jun-14	-1075	Calendar Day								
S7-1400	Strut S2 Removal	14	14	17-Jun-14	30-Jun-14	-1075	Calendar Day								
S7-1420	Sewage Outfall Temp U/U Bridge Load Transfer	7	7	01-Jul-14	07-Jul-14	-1075	Calendar Day								
S7-1500	Tunnel Portion 1 Backfilling to Strut S1 Level (25,000m3; 2,000m3/d)	13	13	08-Jul-14	20-Jul-14	-1075	Calendar Day								
S7-1600	Strut S1 Removal	7	7	21-Jul-14	27-Jul-14	-1075	Calendar Day								
S7-1620	Box Culvert N1 Temp U/U Bridge Load Transfer	7	7	21-Jul-14	27-Jul-14	-1075	Calendar Day								
S7-1640	Backfill and Cooling Mains Temp U/U Bridge Load Transfer (5,000m3; 2,000m3/d)	7	7	28-Jul-14	03-Aug-14	-1075	Calendar Day								
S7-1700	D-Wall Trimming, Drain Installation & Backfilling to Ground Level (13,500m3; 1,000m3/d)	21	21	04-Aug-14	24-Aug-14	-1075	Calendar Day								
Transformer Building for Dining Services at Ferry Pier (VO116)															
Civil Works															
S7-TB-2000	Lay 500mm thk. Rubble Mound	2	2	11-Aug-14	12-Aug-14	-861	HK Working Day								
S7-TB-2010	Blinding Layer	1	1	13-Aug-14	13-Aug-14	-861	HK Working Day								
S7-TB-2020	Base Slab Construction (9.3m x 4.9m x 1m thick)	7	7	14-Aug-14	21-Aug-14	-861	HK Working Day								
Section 8A of the Works - Re-provisioning of Wan Chai Ferry Pier in Area 8															
ABWF & E&M Installation															
S8A-BS-0400	Fender Flat Pads Preparation & Installation	40	3	14-Feb-14 A	24-Apr-14	-183	HK Working Day								
S8A-BS-0410	I Beam & Fender Panel Installation	54	42	29-Mar-14 A	12-Jun-14	-208	HK Working Day								
Specific Procurement															
S8A-BS-0280B	E&M - ELV System (Misc.)	60	30	29-May-13 A	19-May-14	-299	Calendar Day								
Level 1															
Public Area															
S8A-BS-1000	ABWF Works, Plumbing & E&M First Fix	132	7	17-Dec-12 A	29-Apr-14	-197	HK Working Day								
S8A-BS-1070	E&M Final Fix	15	15	05-Sep-13 A	04-May-14	-376	Calendar Day								
Ticket Room, Changing Room & Storing Room															
S8A-BS-1860	ELV System Installation (Emergency Bell System)	30	5	08-Oct-13 A	24-Apr-14	-258	Calendar Day								
S8A-BS-1870	T&C	14	14	25-Apr-14	08-May-14	-258	Calendar Day								
Toilet															
S8A-BS-1170	E&M Final Fix	14	14	05-Sep-13 A	07-May-14	-257	Calendar Day								
S8A-BS-1160	Sanitary Equipment	28	18	10-Jan-14 A	07-May-14	-257	Calendar Day								
Lift															
S8A-BS-1440	T&C	7	7	09-Jan-14 A	26-Apr-14	-267	Calendar Day								
Metalworks															
S8A-BS-1640	G3 Glass Panel Installation	15	7	07-Aug-13 A	26-Apr-14	-246	Calendar Day								
S8A-BS-1630	SS Balustrade Post & Frame Installation	24	3	17-Oct-13 A	22-Apr-14	-242	Calendar Day								
Level 2															
General Area															
S8A-BS-2000	ABWF and E&M First Fix at Level 2 @ +7.70mPD	123	14	17-Dec-12 A	09-May-14	-180	HK Working Day								
Toilet															
S8A-BS-2150	Sanitary Equipment	10	5	30-Aug-13 A	24-Apr-14	-560	Calendar Day								
S8A-BS-2160	E&M Final Fix	14	14	25-Apr-14	08-May-14	-560	Calendar Day								
Metalworks & Glass Panel Installation															
S8A-BS-2230	G3 Glass Panel Installation	14	10	06-Mar-08 A	29-Apr-14	-551	Calendar Day								
S8A-BS-2210	Glass Curtain Wall (Non-FRP) Installation (12mm/19mm thk.)	21	3	25-Jul-13 A	22-Apr-14	-544	Calendar Day								
Level M															
Movable Ramp Machine Room															
S8A-BS-3410	T&C	14	14	20-Mar-14 A	03-May-14	-555	Calendar Day								
Cleaning/ Flushing Water Pump Room															
S8A-BS-3620	T&C	7	7	20-Apr-14	26-Apr-14	-548	Calendar Day								
Roof															
S8A-BS-4010	E&M Installation	28	2	10-Sep-13 A	21-Apr-14	-543	Calendar Day								
Works in Area 8 - ABWF Works at Observation Deck of Ferry Pier															
S8B-FP-01200	Aluminium Cladding	95	10	26-Mar-13 A	29-Apr-14	-109	Calendar Day								
S8B-FP-01100	Roof Finishes & Misc. ABWF Installation	120	45	28-Oct-13 A	03-Jun-14	-144	Calendar Day								
S8B-FP-01300	Handrail & Glass Balustrade Installation	45	14	21-Dec-13 A	03-May-14	-113	Calendar Day								
T&C and Handover															
S8A-TC-9000	Fitting Out Works by Star Ferry (PS36.03(4))	180	176	16-Apr-14 A	12-Oct-14	-415	Calendar Day								
S8A-TC-1500	EMSD Inspection for Lift	0	0	17-May-14	17-May-14	-211	HK Working Day								
S8A-TC-8000	ELV System Installation (Misc.)	30	30	20-May-14	18-Jun-14	-299	Calendar Day								
Section 8B of the Works - Temporary Covered Walkway & Works in Area 8															
Temporary Covered Walkway															
S8B-TGW-01200B	Temp Covered Walkway Footing & Drawpits - GL1-7 (Type 3) near New Ferry Pier (Remaining)	30	28	18-Nov-13 A	26-May-14	-299	HK Working Day								



CHUN WO - CRGL JOINT VENTURE

- Remaining Work
- Actual Work
- Summary Bar
- Critical Remaining Work
- Milestone

CEDD CONTRACT NO. HK/2009/02
Wan Chai Development Phase II - Central-Wan Chai Bypass at Wan Chai East (Contract 2)
3-MONTH ROLLING PROGRAMME (dd 20-Apr-14)

Date	Revision	Checked	Approved
20-Apr-14	3MRP		
20-Feb-14	Baseline Prog		

Activity ID	Activity Name	OD	RD	Start	Finish	Total Float	Calendar	2014							
								Apr 52	May 53	Jun 54	Jul 55	Aug 56			
S8B-TCW-01300	Temp Covered Walkway - GL7-23 (Type 2B) - Excavation along Bulkhead Wall to +2mPD	7	7	05-May-14	13-May-14	-336	HK Working Day								
S8B-TCW-01400	Temp Covered Walkway - GL7-23 (Type 2B) - D-Wall Trimming (50m@2m/d)	28	28	14-May-14	16-Jun-14	-336	HK Working Day								
S8B-TCW-01100	Temp Covered Walkway Footing & Drawpits - GL23-34 (Type 2A) at WCR2	28	28	26-May-14	27-Jun-14	-326	HK Working Day								
S8B-TCW-01500	Temp Covered Walkway - GL7-23 (Type 2B) - Capping Beam Construction (50m@1.5m/d)	34	34	30-May-14	10-Jul-14	-336	HK Working Day								
S8B-TCW-01000	Temp Covered Walkway Footing & Drawpits - GL34-GL53 (Type 1) at Convention Avenue Footpath	28	28	03-Jun-14	05-Jul-14	-332	HK Working Day								
S8B-TCW-01700	Temp Covered Walkway - Steelworks Fixing	30	30	11-Jul-14	09-Aug-14	-418	Calendar Day								
S8B-TCW-01800	Temp Covered Walkway - Roof Panel Installation	30	30	10-Aug-14	08-Sep-14	-418	Calendar Day								
S8B-TCW-02000	Temp Covered Walkway - Paving Block Laying & Planter	30	30	10-Aug-14	08-Sep-14	-403	Calendar Day								
S8B-TCW-01850	Temp Covered Walkway - Drainage Installation	45	45	10-Aug-14	23-Sep-14	-403	Calendar Day								
Section 9B of the Works - CWB Tunnel Structure (CH3400 - CH3796)		253	190	11-Nov-13 A	06-Dec-14	263									
Tunnel Portion 1 (CH3500-CH3630)		64	22	05-Mar-14 A	19-May-14	431									
CWB Structural Works		64	22	05-Mar-14 A	19-May-14	431									
S9B-T1-5000	Roof Slab Crack Rectification & Testing Proposal Submission & Approval	21	7	06-Mar-14 A	26-Apr-14	-1075	Calendar Day								
S9B-T1-5001	Crack Rectification & Testing for Roof Slab	14	14	27-Apr-14	10-May-14	-1075	Calendar Day								
Bay 1		41	22	26-Mar-14 A	19-May-14	-855	HK Working Day								
Roof Concrete, Waterproofing & Scaffolding Removal		41	22	26-Mar-14 A	19-May-14	-855	HK Working Day								
S9B-T1-B1-1440	Roof - Scaffolding Dismantling	3	1	26-Mar-14 A	22-Apr-14	-834	HK Working Day								
S9B-T1-B1-1430	Roof - Waterproofing	7	7	12-May-14	19-May-14	-862	HK Working Day								
Bay 2		64	22	05-Mar-14 A	19-May-14	-855	HK Working Day								
Roof Concrete, Waterproofing & Scaffolding Removal		64	22	05-Mar-14 A	19-May-14	-855	HK Working Day								
S9B-T1-B2-1440	Roof - Scaffolding Dismantling	3	1	05-Mar-14 A	22-Apr-14	-834	HK Working Day								
S9B-T1-B2-1430	Roof - Waterproofing	7	7	12-May-14	19-May-14	-862	HK Working Day								
Bay 3		44	22	20-Mar-14 A	19-May-14	-855	HK Working Day								
Roof Concrete, Waterproofing & Scaffolding Removal		44	22	20-Mar-14 A	19-May-14	-855	HK Working Day								
S9B-T1-B3-1440	Roof - Scaffolding Dismantling	3	1	20-Mar-14 A	22-Apr-14	-834	HK Working Day								
S9B-T1-B3-1430	Roof - Waterproofing	7	7	12-May-14	19-May-14	-862	HK Working Day								
Bay 4		25	22	14-Apr-14 A	19-May-14	-855	HK Working Day								
Roof Concrete, Waterproofing & Scaffolding Removal		25	22	14-Apr-14 A	19-May-14	-855	HK Working Day								
S9B-T1-B4-1450	Roof - Scaffolding Dismantling	3	2	14-Apr-14 A	23-Apr-14	-835	HK Working Day								
S9B-T1-B4-1440	Roof - Waterproofing	7	7	12-May-14	19-May-14	-862	HK Working Day								
Bay 4A		28	22	11-Apr-14 A	19-May-14	-855	HK Working Day								
Roof Concrete, Waterproofing & Scaffolding Removal		28	22	11-Apr-14 A	19-May-14	-855	HK Working Day								
S9B-T1-B4A-1450	Roof - Scaffolding Dismantling	3	2	11-Apr-14 A	23-Apr-14	-835	HK Working Day								
S9B-T1-B4A-1440	Roof - Waterproofing	7	7	12-May-14	19-May-14	-862	HK Working Day								
Bay 5		20	20	24-Apr-14	19-May-14	-855	HK Working Day								
Roof Concrete, Waterproofing & Scaffolding Removal		20	20	24-Apr-14	19-May-14	-855	HK Working Day								
S9B-T1-B5-1450	Roof - Scaffolding Dismantling	3	3	24-Apr-14	26-Apr-14	-838	HK Working Day								
S9B-T1-B5-1440	Roof - Waterproofing	7	7	12-May-14	19-May-14	-862	HK Working Day								
Bay 6 (For OHVD Base Slab & Side Wall, Combined to Bay 5)		22	22	22-Apr-14	19-May-14	431									
Wall		10	10	30-Apr-14	13-May-14	436									
S9B-T1-B6-1120	Wall (Middle Late Cast) - Rebar Fixing	4	4	30-Apr-14	05-May-14	436	HK Working Day								
S9B-T1-B6-1130A	Wall (Middle Late Cast) - Formwork	3	3	07-May-14	09-May-14	436	HK Working Day								
S9B-T1-B6-1130B	Wall (Middle Late Cast) - Concrete	1	1	10-May-14	10-May-14	436	HK Working Day								
S9B-T1-B6-1140	Wall (Middle Late Cast) - Curing & Formwork Removal	3	3	11-May-14	13-May-14	538	Calendar Day								
Roof Concrete, Waterproofing & Scaffolding Removal		22	22	22-Apr-14	19-May-14	-855	HK Working Day								
S9B-T1-B6-1450	Roof - Scaffolding Dismantling	3	3	22-Apr-14	24-Apr-14	-836	HK Working Day								
S9B-T1-B6-1440	Roof - Waterproofing	7	7	12-May-14	19-May-14	-862	HK Working Day								
Bay 7		22	22	22-Apr-14	19-May-14	-855	HK Working Day								
Roof Concrete, Waterproofing & Scaffolding Removal		22	22	22-Apr-14	19-May-14	-855	HK Working Day								
S9B-T1-B7-1450	Roof - Scaffolding Dismantling	3	3	22-Apr-14	24-Apr-14	-836	HK Working Day								
S9B-T1-B7-1440	Roof - Waterproofing	7	7	12-May-14	19-May-14	-862	HK Working Day								
Bay 8		14	14	26-Apr-14	14-May-14	-851	HK Working Day								
Roof Concrete, Waterproofing & Scaffolding Removal		14	14	26-Apr-14	14-May-14	-851	HK Working Day								
S9B-T1-B8-1440	Roof - Scaffolding Dismantling	3	3	26-Apr-14	29-Apr-14	-840	HK Working Day								
S9B-T1-B8-1430	Roof - Waterproofing	3	3	12-May-14	14-May-14	-858	HK Working Day								
Tunnel Portion 2 (CH3425-CH3500)		186	186	26-Apr-14	06-Dec-14	41									
Foundation		51	51	26-Apr-14	27-Jun-14	51									
S9B-T2-1030	Stage 2 Bored Pile works - PS15 & PS16 (14d/pile; 1 rigs)	28	28	26-Apr-14	30-May-14	50	HK Working Day								
S9B-T2-1130	Tunnel portion 2 Pump Test	28	28	31-May-14	27-Jun-14	61	Calendar Day								
CWB Structural Works		125	125	11-Jul-14	06-Dec-14	41	HK Working Day								
S9B-T2-2000	Tunnel portion 2 ELSW excavation (62,500m3; 500m3/d)	125	125	11-Jul-14	06-Dec-14	41	HK Working Day								
Tunnel Portion 3 & Tunnel Portion 4 (CH3630-CH3790)		212	122	11-Nov-13 A	16-Sep-14	-158									
Foundation		212	122	11-Nov-13 A	16-Sep-14	-158									
Stage 2 - Southern Wall after HHR Flyover Diversion (Stage 1) (C130A-P131; P144-C154)		197	122	11-Feb-14 A	16-Sep-14	-170									
S9B-T34-1230C	Pre-grouting & Guidewall for P147-P154	28	25	11-Feb-14 A	14-May-14	-276	Calendar Day								
S9B-T34-1270	Existing 450mm Stormwater Drain Diversion	21	21	17-Feb-14 A	17-May-14	-222	HK Working Day								
S9B-T34-1260B	Bored Pile Construction (PS30-PS32; 14d/pile; 1 Rig)	42	41	16-Apr-14 A	30-May-14	-100	Calendar Day								
S9B-T34-1250A	D-wall Construction along HHR slow lane (C130A-P131; 8d/Panel)	24	24	20-Apr-14	13-May-14	-368	Calendar Day								
S9B-T34-1250B	D-wall Construction along HHR slow lane (P144-P146; 8d/Panel)	24	24	20-Apr-14	13-May-14	-368	Calendar Day								
S9B-T34-1250C	D-wall Construction along HHR slow lane (P147-C154; 6d/Panel)	48	48	31-Jul-14	16-Sep-14	-353	Calendar Day								

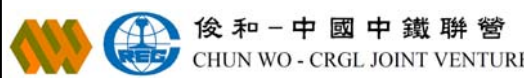
CHUN WO - CRGL JOINT VENTURE

- Remaining Work
- Actual Work
- Summary Bar
- Critical Remaining Work
- Milestone

CEDD CONTRACT NO. HK/2009/02
Wan Chai Development Phase II - Central-Wan Chai Bypass at Wan Chai East (Contract 2)
3-MONTH ROLLING PROGRAMME (dd 20-Apr-14)

Date	Revision	Checked	Approved
20-Apr-14	3MRP		
20-Feb-14	Baseline Prog		

Activity ID	Activity Name	OD	RD	Start	Finish	Total Float	Calendar	2014						
								Apr 52	May 53	Jun 54	Jul 55	Aug 56		
Stage 3 - Northern Wall after TWCR4 Reclamation (C88-C105)														
S9B-T34-1410	Pre-drilling at TWCR4	186	102	11-Nov-13 A	30-Jul-14	-147	Calendar Day							
S9B-T34-1420C	Pre-grouting & Guide Wall Construction for P100-C105	21	14	19-Feb-14 A	03-May-14	-217	Calendar Day							
S9B-T34-1420B	Pre-grouting & Guide Wall Construction for C88-P96	28	28	28-Mar-14 A	17-May-14	-333	Calendar Day							
S9B-T34-1430A	D-wall Construction at TWCR4 (P97-P99; 8d/Panel)	24	24	14-May-14	06-Jun-14	-368	Calendar Day							
S9B-T34-1440F	Bored Pile Construction (PN27; 14d/pile)	14	14	31-May-14	13-Jun-14	-100	Calendar Day							
S9B-T34-1430B	D-wall Construction at TWCR4 (C88-P96; 6d/Panel)	54	54	07-Jun-14	30-Jul-14	-353	Calendar Day							
Temp Works for HHR Flyover Diversion (Stage 2)														
Bridge 1														
S9B-TTA-1000	Excavation & D-Wall Modification for Supporting Bridge 1	37	37	07-Jun-14	21-Jul-14	-294	Calendar Day							
S9B-TTA-1100	Overall Excavation to +1mPD	7	7	03-Jul-14	10-Jul-14	-295	HK Working Day							
S9B-TTA-1300	Installation of S1 Strut & Bracing	7	7	11-Jul-14	18-Jul-14	-295	HK Working Day							
S9B-TTA-1400	Installation of Bridge 1 spanning across CWB	3	3	19-Jul-14	21-Jul-14	-367	Calendar Day							
Bridge 2														
S9B-TTA-2000	D-Wall Modification for Supporting Bridge 2	14	14	14-May-14	29-May-14	-281	HK Working Day							
S9B-TTA-2100	Excavation & Installation of S1 Strut	12	12	30-May-14	13-Jun-14	-281	HK Working Day							
S9B-TTA-2200	Installation of Bridge 2 spanning across CWB	5	5	19-Jun-14	23-Jun-14	-356	Calendar Day							
Bridge 3														
S9B-TTA-3400	Steel Supporting Frame Erection for Bridge 3	30	30	28-Apr-14	04-Jun-14	-281	HK Working Day							
S9B-TTA-3500	Installation of Bridge 3 connecting with Existing HHR Flyover	14	14	05-Jun-14	18-Jun-14	-351	Calendar Day							
At-Grade Roadworks														
S9B-TTA-4150	Concrete Deck & Steel Deck on Existing Box Culvert O Bay 17 - Bay 19	35	35	22-Apr-14	04-Jun-14	-285	HK Working Day							
S9B-TTA-4100	At-Grade Temp Roadworks, Drainage & Furniture Installation in TWCR4 Area	45	45	07-Jun-14	30-Jul-14	-287	HK Working Day							
S9B-TTA-4200	Road Furniture Installation & Pavement Works on Bridge 3	30	30	19-Jun-14	24-Jul-14	-282	HK Working Day							
S9B-TTA-4000	Road Furniture Installation & Pavement Works on Bridge 2	30	30	24-Jun-14	29-Jul-14	-286	HK Working Day							
S9B-TTA-4300	Road Furniture Installation & Pavement Works on Bridge 1	15	15	22-Jul-14	07-Aug-14	-294	HK Working Day							
S9B-TTA-4400	Diversion of Traffic to Steel Bridges & TWCR4 (Stage 2 TTA)	0	0		07-Aug-14	-366	Calendar Day							
S9B-TTA-4500	Demolish of Approach Ramp of Existing HHR Flyover for D-Wall Construction	24	24	08-Aug-14	04-Sep-14	-294	HK Working Day							
S9B-TTA-4600	Utility Diversion for D-Wall near Existing HHR Flyover Approach Ramp	35	35	08-Aug-14	11-Sep-14	-347	Calendar Day							
Section 11 of the Works - Remainder of Works														
Marine Works at WCR2														
S11-R2-1600	Removal of Existing SHK Pump House M&E equipment	66	35	09-Apr-14 A	24-May-14	-405	Calendar Day							
S11-R2-1800B	Complete remaining reclamation at WCR2 (Stage 2) - Remaining at WCR2	7	5	09-Apr-14 A	24-May-14	-405	Calendar Day							
Marine Works at WCR3														
S11-R3-1100	Mobilisation of Dredger of 1st Stage Dredging	113	113	20-Apr-14	04-Sep-14	-237	Calendar Day							
S11-R3-1200	Advanced Dredging at Permanent Seawall Area by Night Work (20,200m3 @ 250m3/d)	2	2	20-Apr-14	21-Apr-14	-300	Calendar Day							
S11-R3-1300	Advanced Rockfilling for Seawall by Night Work (24,000m3 @ 500m3/d)	80	80	22-Apr-14	10-Jul-14	-300	Calendar Day							
Demolition Works														
S11-DEMO-1200	Advanced Works - Cutting Electricity Supply to existing WSD SWPS to HEC	48	48	11-Jul-14	04-Sep-14	-237	HK Working Day							
Soft Landscaping & Establishment Works														
Section 8C of the Works - Landscape Softworks in Area 8														
S8C-0010	Carry out landscape soft work on new ferry pier	42	42	20-Apr-14	31-May-14	-412	Calendar Day							
Section 8D of the Works - Establishment Works in Area 8														
S8D-0010	Carry out establishment work on new ferry pier	2375	861	24-Feb-10 A	27-Aug-16	0	Calendar Day							
Section 12 of the Works - Protection and Preservation of Existing Trees														
S12-0010	Protection and preservation of existing trees	2375	861	24-Feb-10 A	27-Aug-16	0	Calendar Day							
SUMMARY PROGRAMME														
CWB Tunnel Construction & Remaining Works (Section 9A, 9B, 10 & 11)														
CWB Tunnel Works in WCR1														
SUM-CWB-14000	Backfilling for Tunnel Portion 1	1071	437	25-Jul-12 A	30-Jun-15	-154	Calendar Day							
CWB Tunnel Works in WCR2														
SUM-CWB-20000	Reclamation at WCR2	97	97	20-May-14	24-Aug-14	-869	Calendar Day							
SUM-CWB-21000	Foundation for Tunnel Portion 2	865	231	25-Jul-12 A	06-Dec-14	52	Calendar Day							
SUM-CWB-22000	Pump Test & Excavation for Tunnel Portion 2	224	35	25-Jul-12 A	24-May-14	-405	Calendar Day							
CWB Tunnel Works in WCR3														
SUM-CWB-30000	Reclamation at WCR3 & Ferry Pier Demolition (Except Water Channel Maintained for HK/2009/01)	366	41	27-Dec-12 A	30-May-14	61	Calendar Day							
CWB Tunnel Works in WCR4/TWCR4														
SUM-CWB-41000B	Foundation for Tunnel Portion 3&4 (except Eastern Bulkhead Wall)	190	190	31-May-14	06-Dec-14	52	Calendar Day							
Reprovisioning of Existing Facilities (Section 3, 4A, 4B, 4C, 5, 6, 7, 8A & 8B)														
Reprovisioning of Box Culvert N (Section 7)														
SUM-FAC-52000	VO116 - New Transformer Building to Ferry Pier	435	435	22-Apr-14	30-Jun-15	-413	Calendar Day							
Reprovisioning of Wan Chai Ferry Pier & Covered Walkway (Section 8A & 8B)														
SUM-FAC-62000	Ferry Pier ABWF Works	457	321	11-Nov-13 A	06-Mar-15	-330	Calendar Day							
SUM-FAC-65000	ABWF Works on Observation Deck under Section 8B	249	249	11-Aug-14	16-Apr-15	-1074	Calendar Day							
SUM-FAC-66000	Temp Covered Walkway	463	179	17-Dec-12 A	15-Oct-14	-188	Calendar Day							



■ Remaining Work ■ Summary Bar
■ Actual Work ■ Critical Remaining Work
◆ Milestone

CEDD CONTRACT NO. HK/2009/02
Wan Chai Development Phase II - Central-Wan Chai Bypass at Wan Chai East (Contract 2)
3-MONTH ROLLING PROGRAMME (dd 20-Apr-14)

Date	Revision	Checked	Approved
20-Apr-14	3MRP		
20-Feb-14	Baseline Prog		

Activity ID	Activity Name	Original Duration	Start	Finish	2014					
					Apr	May	Jun	Jul	Aug	
HY/2010/08: CWB-SR8 Three Months Rolling Programme_updated up to 20140420										
Works in TS3										
TS3 East & West Reclamation Works										
TS3E - Reclamation (Advance Works)										
TS3E.MW.1080	TS3E South - Dredging Works (Type 3)	19	07-May-14*	28-May-14						
TS3E.MW.1085	TS3E South - Dredging Works (Type 1 & 2)	28	29-May-14*	02-Jul-14						
TS3E.MW.1140	C15 - Complete TZ2 (Forecast Completion of TZ2)	0		31-May-14*						
TS3E.MW.1090	TS3E South - Rockfill + Levelling	20	23-Jun-14	16-Jul-14						
TS3E.MW.1110	TS3E South - Commence Water Intake Diversion	0	30-Jun-14*							
TS3E.MW.1100	TS3E South - Seawall Block Installation	48	08-Jul-14	01-Sep-14						
Works in SR8 (Open Cut Method)										
SR8 - Cofferdam & Cut & Cover Tunnel Works										
SR8 East Bound - (Seaside to Victoria Road / IEC Central Divider)										
TTA Stage 0 - East Bound										
Stage 1A - East Bound (Seaside) (Ref. DRG. No.CDD/SR8/082)										
SR8.EB.1050	Carry out Stage 1A TAM Grout	10	22-Apr-14*	03-May-14						
Gas Mains										
SR8.EB.1290	Backfill Trench	2	14-Apr-14 A	22-Apr-14						
Stage 1B - East Bound (Seaside) (Ref. DRG. No.CDD/SR8/082)										
SR8.EB.1530	Pre-fabrication of Steel Traffic Deck	36	22-Apr-14*	05-Jun-14						
SR8.EB.1550	Re-Mobilise Rig / Plant to Seaside	4	23-Apr-14	26-Apr-14						
SR8.EB.1400	Carry-out pretreatment for Stage 1B Sheet Pile	4	25-Apr-14	29-Apr-14						
SR8.EB.1210	Carry-out preboring for Stage 1B Sheet Pile	6	30-Apr-14	08-May-14						
SR8.EB.1220	Carry-out Stage 1B Sheet Piling works	6	05-May-14	12-May-14						
SR8.EB.1140	Carry out Pipe Piling Work (A21-A24,A24a,A24b, A34-A35, B2-B8, B14-B18) 20nos.	20	09-May-14	31-May-14						
SR8.EB.1250	Install King Post for Traffic Deck (8 nos.)	13	26-May-14	10-Jun-14						
SR8.EB.1255	Carry-out Stage 1B TAM Grout + Jet Grouting (12nos)	6	30-May-14	06-Jun-14						
SR8.EB.1260	Construct Traffic Deck and Temporary Road (including Road Marking & Traffic Signage)s	18	05-Jun-14	25-Jun-14						
SR8.EB.1560	Road Works (including site formation, construction of subbase, asphalt & wearing course)	16	11-Jun-14	28-Jun-14						
SR8.EB.1270	Install Temporary Traffic Directional Signs for TTA Stage 1	6	30-Jun-14	07-Jul-14						
TTA Stage 1 - East Bound										
Stage 2 - East Bound (Ref. DRG. No.CDD/SR8/083)										
SR8.EB.1310	Implement TTA Stage 1 - Traffic Diversion at East Bound (DRG Ref. 4843/011/021E)	0	08-Jul-14							
SR8.EB.1315	Excavate Trench and Expose underground utilities (Carriage way)	8	08-Jul-14	16-Jul-14						



- Actual Work
- Remaining Work
- Critical Remaining Work
- ◆ Milestone

Date	Revision	Checked	Approved
20-Apr-14	Updated to 20th Apr 2014	DML/WC	

Activity ID	Activity Name	Original Duration	Start	Finish	2014					
					Apr	May	Jun	Jul	Aug	
SR8.EB.1320	Divert Gas Main to pre-laid Gas Main Pipe at Planter Area Gas Main Trough	18	17-Jul-14	06-Aug-14						
SR8.EB.1325	Protect and Shift HV 22kv Cable on carriage way (as required)	18	17-Jul-14	06-Aug-14						
SR8.EB.1327	Cut and By pass Drainage to the next (existing) collection point (MH)	18	17-Jul-14	06-Aug-14						
SR8 West Bound - Ch. 369.000 to 495.000 (Victoria Road / IEC Central Divider)										
TTA Stage 0 (West Bound)										
Stage 1A - West Bound (Inside VP) (Ref. DRG. No.CDD/SR8/085)										
SR8.WB.1080	Pipe Piling Work Row A (A119-A155) - 19nos	63	08-Jan-14 A	17-May-14						
SR8.WB.1035.1	Pipe Piling Works Row B (B83-B92, B101-B113) - 16nos	24	20-Feb-14 A	13-May-14						
SR8.WB.1100	Install King Post for Traffic Deck (9nos)	18	12-Mar-14 A	17-May-14						
Stage 1B - West Bound (Inside VP) (Ref. DRG. No.CDD/SR8/085)										
SR8.WB.1230	Carry out Stage 1B Pipe Piling Work A118, B93-B100 (9nos)	40	13-Mar-14 A	02-May-14						
SR8.WB.1112	Carry out TAM Grout	30	24-Mar-14 A	21-May-14						
SR8.WB.1250	Construction of Traffic Deck and Temporary Road	35	22-Apr-14*	04-Jun-14						
SR8.WB.1220	Carry out Stage 1B Sheet Pile Work	20	23-Apr-14*	17-May-14						
SR8.WB.1260	Remove the Temporary Working Platform	6	27-May-14	04-Jun-14						
SR8.WB.1270	Construction Road Marking & Traffic Signage	3	05-Jun-14	07-Jun-14						
TTA Stage 1 - West Bound										
Stage 2A - West Bound (Ref. DRG. No.CDD/SR8/086)										
SR8.WB.2010	Implement Traffic Diversion TTA Stage 1 at West Bound	0	04-Jun-14							
SR8.WB.2020	Carry out Stage 2A Sheet Pile Work	17	04-Jun-14	23-Jun-14						
SR8.WB.2030	Carry out Stage 2A Pipe Piling Work	56	17-Jun-14	21-Aug-14						
SR8 Ch.369.000 to Ch.317.500 - (Inside Victoria Park to Tunnel Portal)										
Stage 4 - SR8 Ch.369.000 to Ch317.500 (Tunnel Portal) (Ref. DRG. No.CDD/SR8/087)										
SR8.VP.4010	Carry Out Stage 4 Sheet Pile Works	90	14-Apr-14 A	18-Aug-14						
Tsing Fung St - RW & Subway Extension & Toe Wall at Hing Fat St										
Ret. Wall & TF Subway Extension (Portion V)										
Retaining Wall at Tsing Fung Street (Portion V)										
VP_1215	Erection of Site Hoarding	26	22-Apr-14*	23-May-14						
VP_1205	Implement TTA	2	24-May-14	26-May-14						
VP_1225	Pre-boring for Sheet Pile	12	27-May-14	10-Jun-14						
VP_1235	TFS New Ret. Wall -sheet pile (400 m2)	12	11-Jun-14	24-Jun-14						
VP_1240	TFS New Ret. Wall - excavation	42	25-Jun-14	13-Aug-14						
VP_1260	TFS New Ret. Wall - base slab	42	10-Jul-14	27-Aug-14						
Retaining Wall + Toe Wall at Hing Fat Street										
Tree Transplanting at Portion VIII (Tree Zone 20) (6 trees)										

Activity ID	Activity Name	Original Duration	Start	Finish	2014				
					Apr	May	Jun	Jul	Aug
VP_1130	Site Possession Portion VIII (486d) (Slope along Hing fat St)	0	21-Jul-14						◆ Site Possession Po
VP_1700	Preparation and Site Hoarding	36	21-Jul-14	30-Aug-14					
Works in Victoria Park									
Re-Provisioning Works									
Bowling Green Office									
BGO - Construction Works									
VP_1150	BGO - Underground utilities & foundation works	36	19-Mar-14 A	21-May-14					
VP_1180.01	BGO - Base Slab	24	22-May-14	19-Jun-14					
VP_1180.02	BGO - Walls	36	06-Jun-14	18-Jul-14					
VP_1180.03	BGO - Roof Slab + Plinths + Parapet	45	05-Jul-14	26-Aug-14					
Tree Transplanting at Portion XIV (Victoria Park Open Space)									
VP_1040	Tree Transplanting & Upkeep at Portion XIV	347	16-Oct-13 A	16-Dec-14					
Mooring Components Upkeep (CBTS and ATS)									
Works for Public Works Regional Laboratory (North Lantau)									